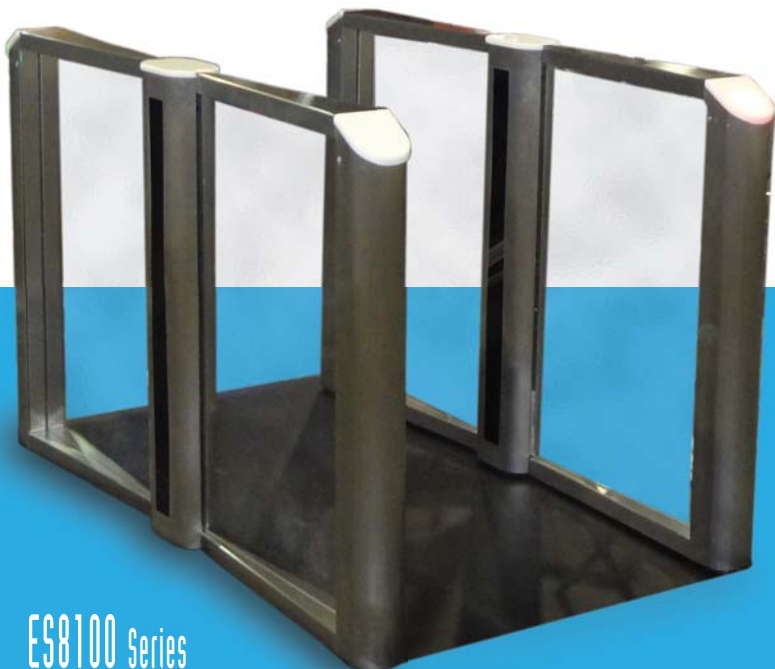


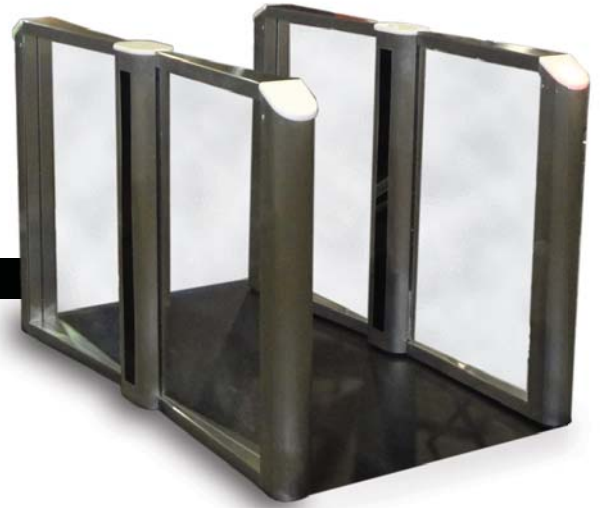
# ES8100

## Optical Turnstile

Designed for lobby/entry applications where styling is important, the ES8100 Optical Turnstile provides aesthetically pleasing pedestrian passageways to controlled or restricted areas. These units will monitor high throughput pedestrian traffic flow of up to 60 people per minute per lane, while optical sensors ensure only one person enters for each authorized I.D. card presented.



ES8100 Series



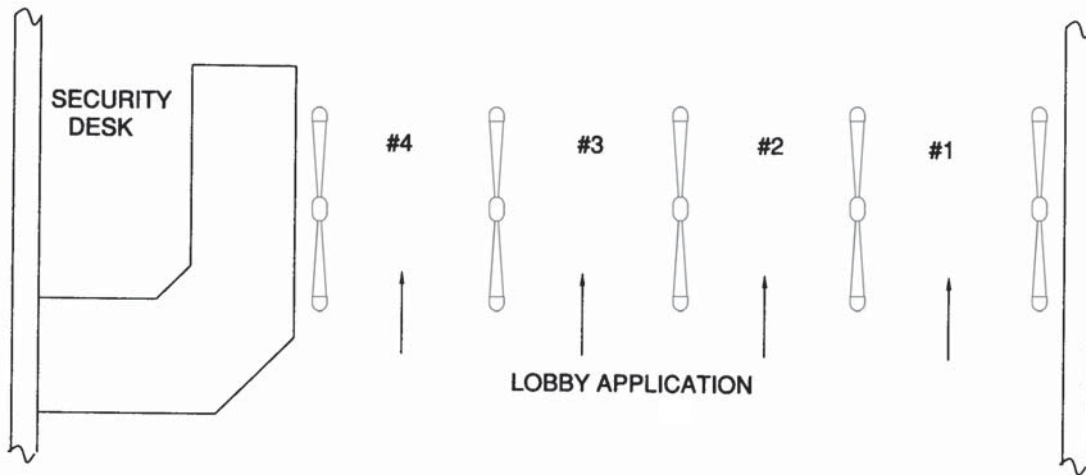
### FEATURES & BENEFITS

- Complements any architectural styling
- Encourages employees to maintain access control procedures
- Compact, space conscious design
- No moving parts
- Detects tailgating
- Compatible with all access control systems
- Field configurable for card in/card out or card in/free exit operation
- Reduces number of personnel needed to monitor building entry/exit points
- High throughput easy entry or exit for authorized personnel
- Excellent servicability
- ADA compatible

**DSI**<sup>®</sup>  
DESIGNED SECURITY, INC.  
*A Detex Company*

1402 Hawthorne St.  
Bastrop, TX 78602  
Voice: 1-800-272-3555  
Fax: 1-512-321-9181  
E-mail: [dsi@dsigo.com](mailto:dsi@dsigo.com)  
[www.dsigo.com](http://www.dsigo.com)

# ES8100 Optical Turnstile - Typical Applications



## ELECTRICAL SPECIFICATIONS

<b>Power:</b>	12 VDC @ 700 mA/walkway
<b>Control Input:</b>	N/O-Momentary "Valid A card" (max. 1sec. pulse closure) N/O-Momentary "Valid B card" (max. 1sec. pulse closure) N/O-Momentary/Maintained "Remote bypass"
<b>Control Output:</b>	Form "C" Alarm contact status Form "C" "A" passage complete contact status Form "C" "B" passage complete contact status All relays rated at 1 Amp @ 30VDC
<b>Audible Alarm:</b>	80 dB @ 3 ft.

## MECHANICAL SPECIFICATIONS

<b>Size:</b>	60.00" L x 38.00" H x 4.38" W
<b>Mounting:</b>	Steel bases w/ (6) 3/4" mounting holes and 2" conduit hole in center stantion
<b>Finish:</b>	Top Surface: Stainless Steel with glacier ice translucent end cap Side Panel: Acrylic panel and Satin Brushed Stainless Steel

## CRITERIA FOR DESIGNING AN OPTICAL TURNSTILE WALKWAY

1. Determine the number of walkways required based on the desired pedestrian throughput and space availability. A conservative estimate of pedestrian throughput is up to 60 people/min., per walkway. This figure assumes the use of a fast response (1/4 sec.) card reader system.
2. Walkway bollards should be spaced 24" - 37" apart. Wider spacing may result in pedestrians attempting to pass through the lane two – abreast, resulting in a high incident of alarms.

**DSI**<sup>®</sup>  
DESIGNED SECURITY, INC.  
A Detex Company

1402 Hawthorne St.  
Bastrop, TX 78602  
Voice: 1-800-272-3555  
Fax: 1-512-321-9181  
E-mail: [dsi@dsigo.com](mailto:dsi@dsigo.com)  
[www.dsigo.com](http://www.dsigo.com)