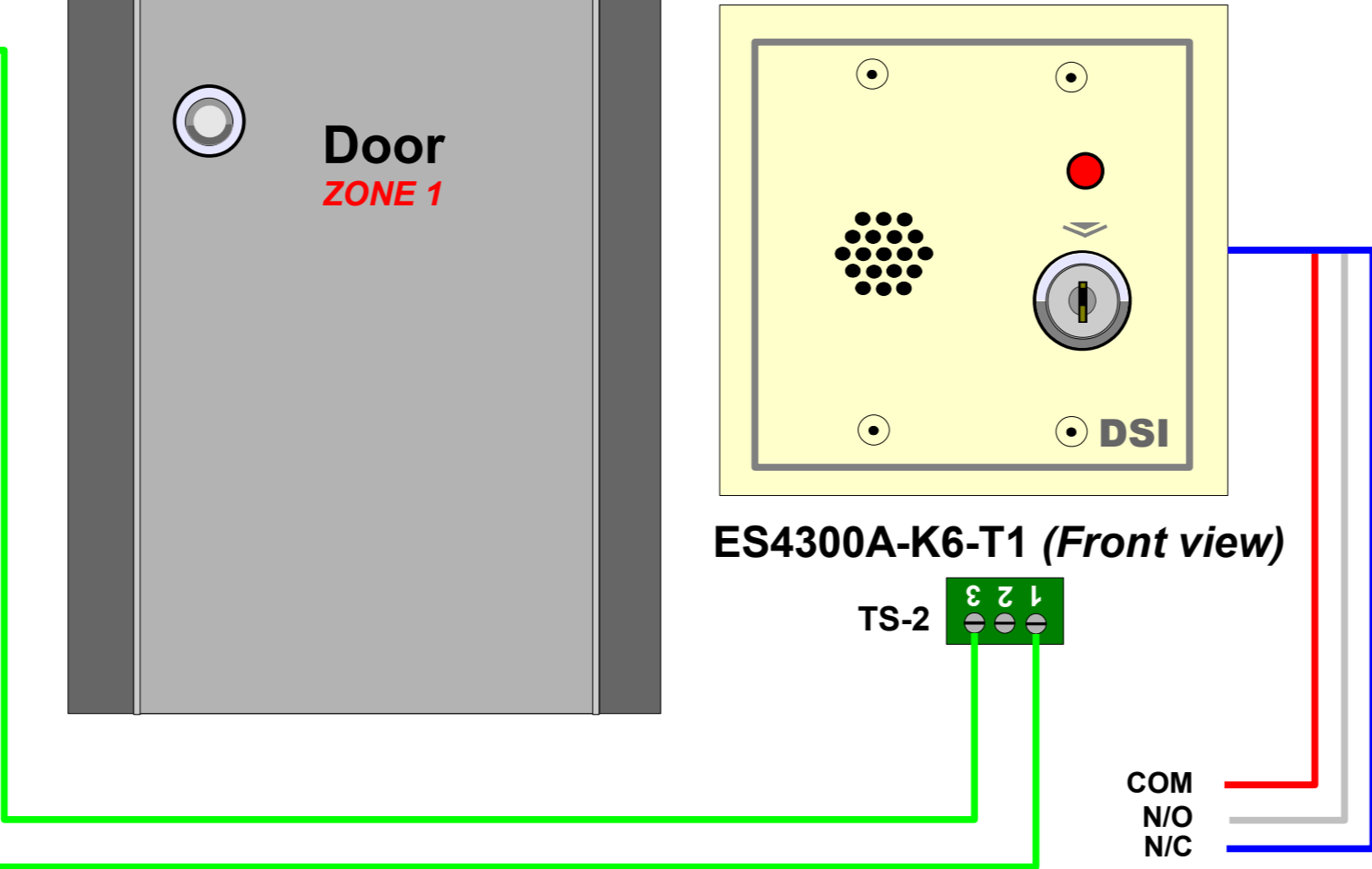
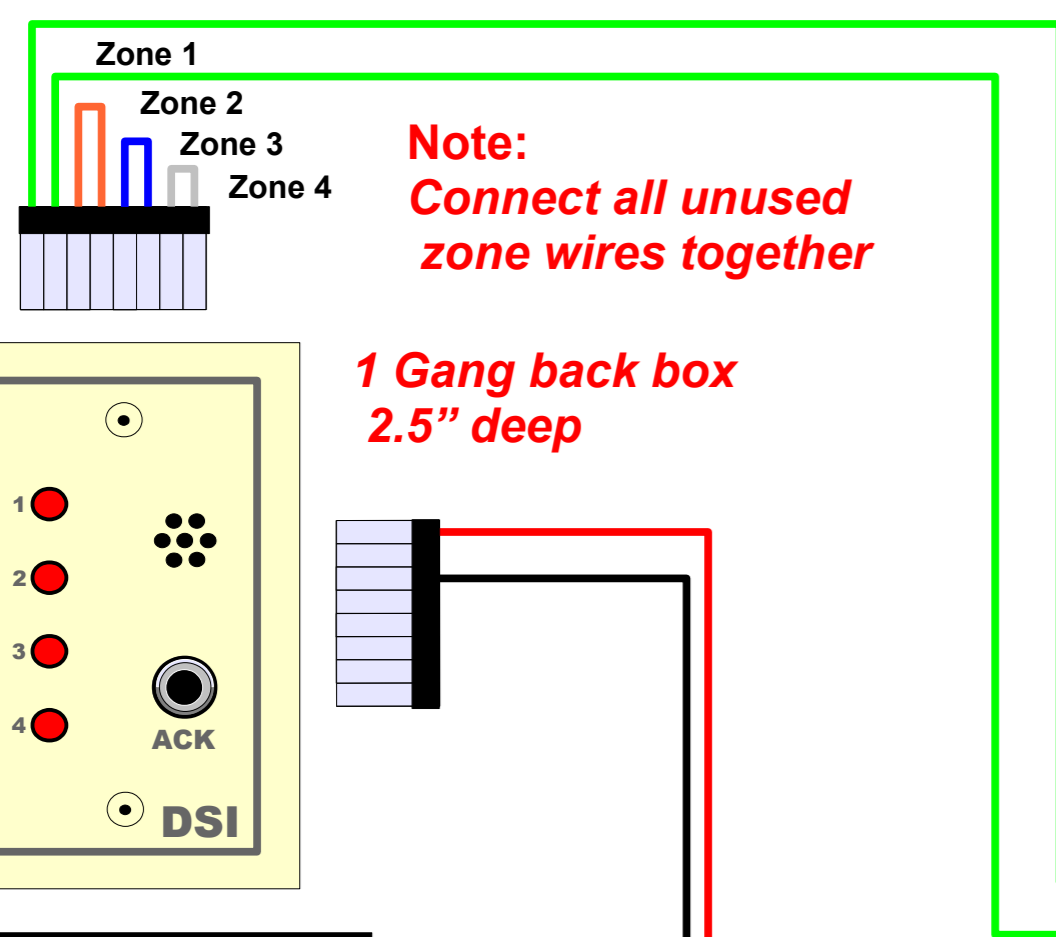
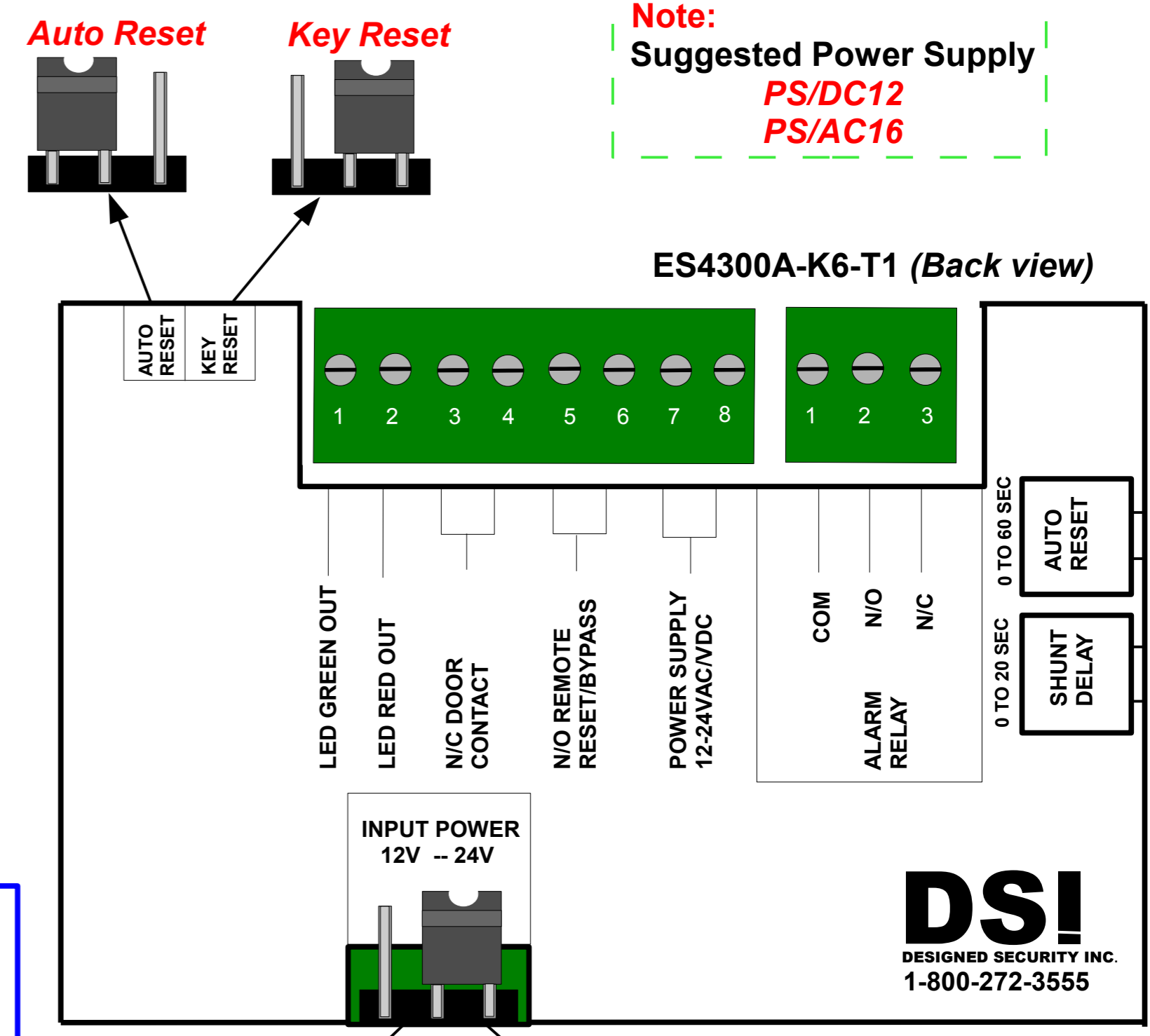
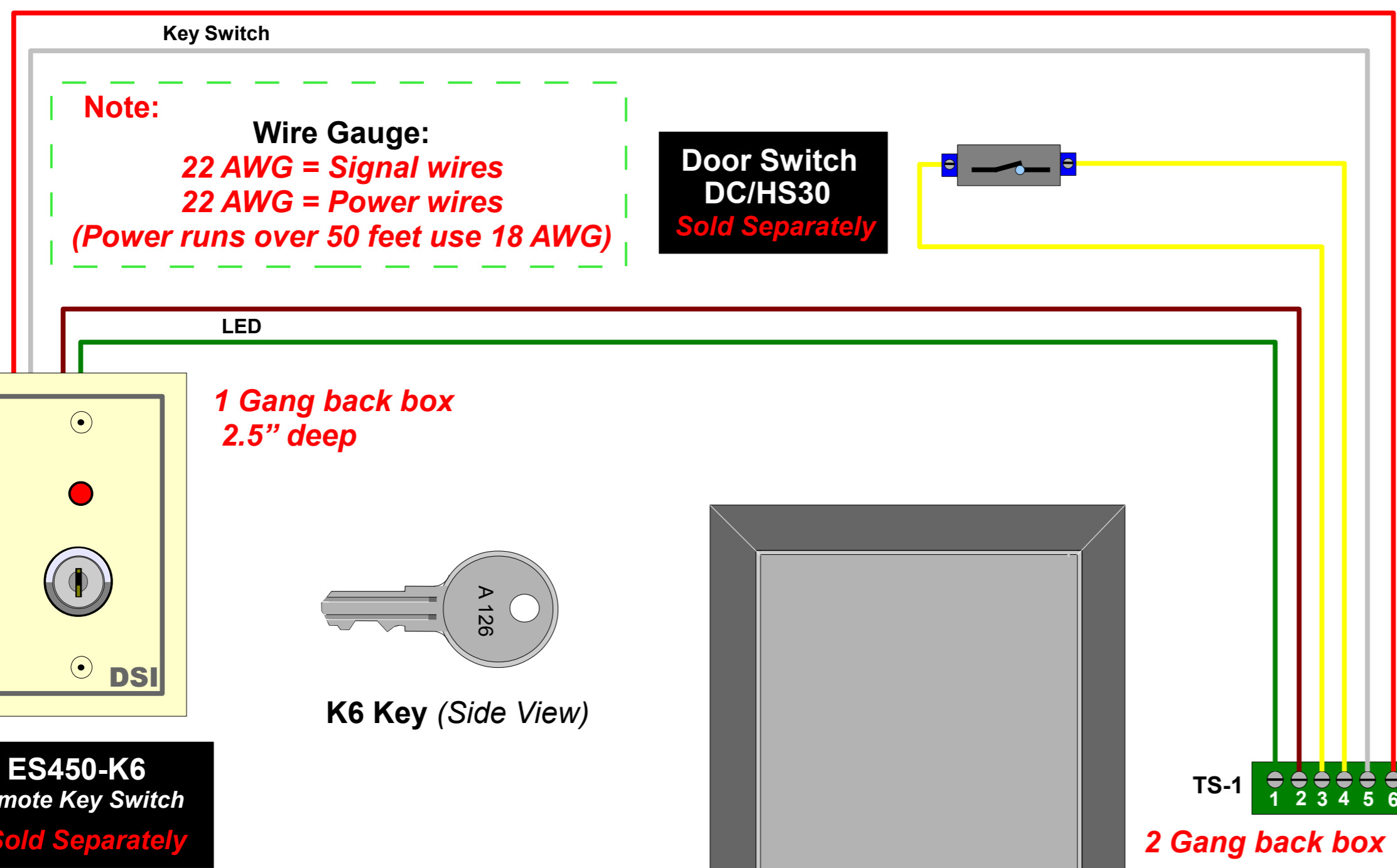
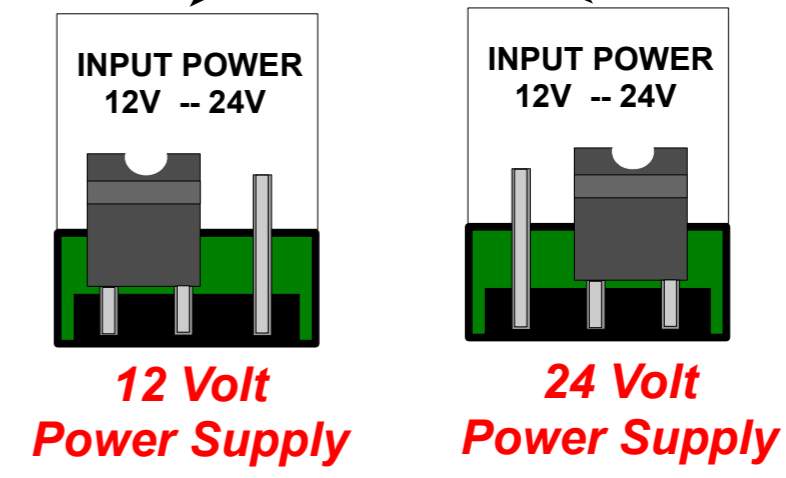


**12-24 VAC/VDC
200mA
Power Supply**
Sold Separately

Note:
Suggested Power Supply
*PS/DC12
PS/AC16*



Note:
Key switch status



DSI!
DESIGNED SECURITY, INC.
1-800-272-3555

**12 VDC
150mA
Power Supply**
Sold Separately

Specifications: ES4300A
Power: 12-24 VAC/VDC at (200mA)
Auto Reset: 0-60sec
Shunt Delay: 0-20sec
Input: N/C door contact
Output: N/C-N/O Alarm contact 1000mA at 30 VDC
Horn Volume: 103 dB

ES4300A-K6-T1